



RAMI SHIBANY

PRIVATE COLLECTION

2025

- | | |
|------------------------|-------------------------------|
| 1. A-303- | (12 Cal) S/A M-Choke |
| 2. A-302-LUSSO | (12 Cal) S/A M-Choke |
| 3. A-302 | (12 Cal) S/A M-Choke |
| 4. A-301 | (12 Cal) S/A M-Choke |
| 5. A-301 | (20 Cal) S/A |
| 6. S-685 LIGHT | (12 Cal) O/U |
| 7. S-56E | (20 Cal) O/U |
| 8. S-55 | (20 Cal) O/U |
| 9. S-55 | (12 Cal) O/U |
| 10. Mono- Block | (20 Cal) SXS |
| 11. Mono-Block | (28 Cal) Single Barrel |



A-303- (12 Cal) S/A Mobile-Choke

Caliber: 12 Gauge

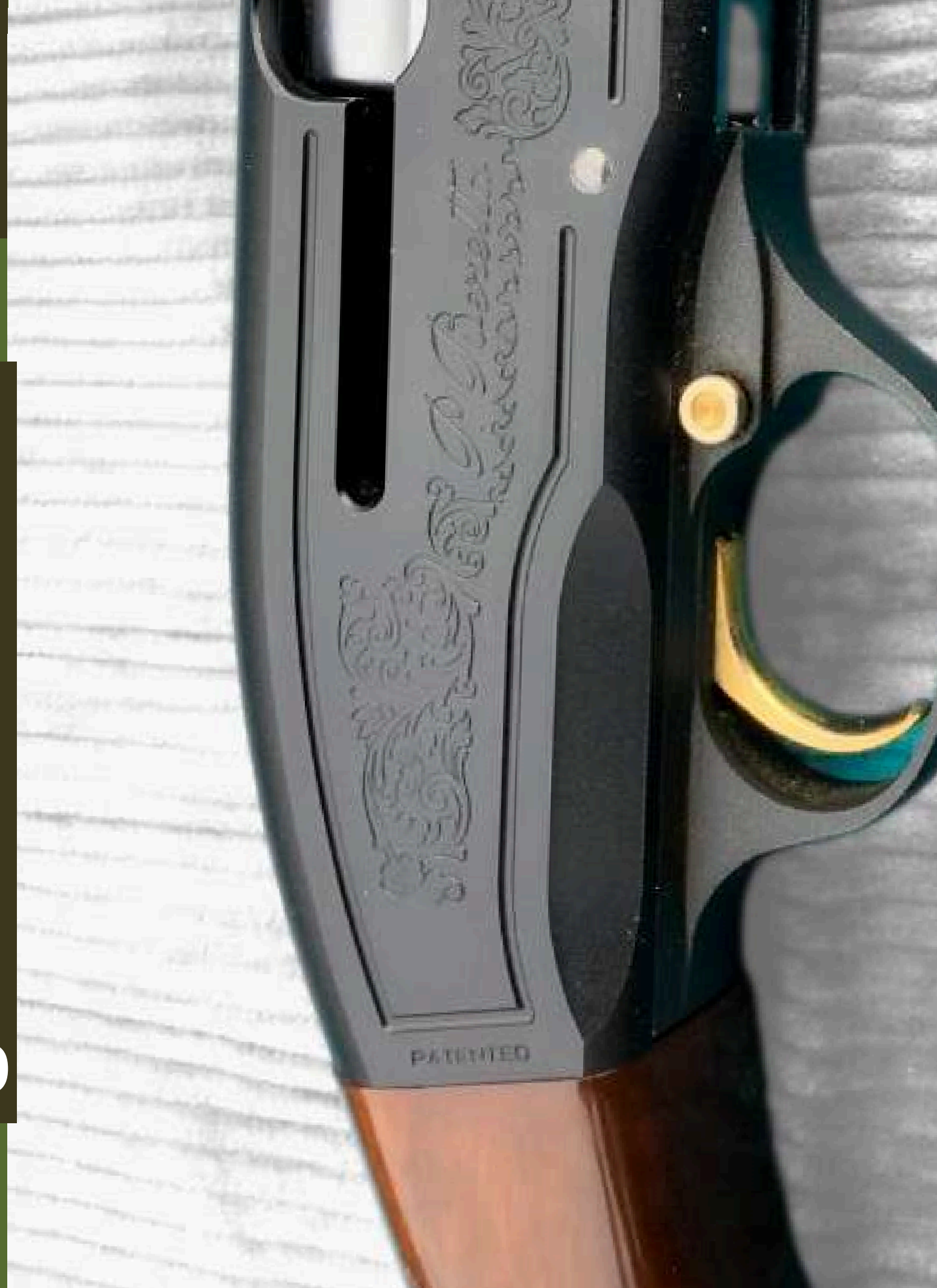
Serial Number: M 92739 E

Barrel Length: 28 inches

**Chamber Size: 2-3/4inch
(70mm)**

**Choke System: Mobile-
Chokes (1, 2, 3)**

Year of Manufacture: 1990



A-303 Mobile- chokes

Gas-Assisted Cycling:

The A303 features an advanced gas-operated system that utilizes the energy from each shot to cycle the action smoothly and reliably, promoting consistent shell feeding and minimizing the risk of misfires.



Beretta A303- Mobile Chokes

Stock & Ergonomics

The shotgun is fitted with a premium walnut stock, expertly crafted with ergonomic checkering to enhance grip, comfort, and overall balance. Engineered to absorb recoil efficiently, the stock maintains the timeless aesthetic that defines Beretta's traditional design.

Precision Machining

High-precision machining of critical components—including the gas system, barrel, and drop-in choke assembly—ensures tight tolerances and optimal performance. Complementing this, hand-finishing techniques such as detailed bluing and engraving enhance both functional reliability and aesthetic refinement.

Muzzle Velocity & Chokes

The interchangeable choke system allows for precise optimization of shot patterns—ranging from tight groupings for long-range accuracy to wider spreads for close-range engagements. The integrated tubular magazine typically holds three shells, with an additional round chambered, providing reliable capacity for successive shots.



A-303- Mobile- chokes

The Beretta A302 - Cal. 12 with Choke exemplifies refined Italian firearm engineering, seamlessly blending traditional design with modern innovation. Its gas-assisted semi-automatic action, paired with a user-friendly Mobilchoke system, delivers outstanding reliability and adaptability across various shooting conditions



A-302-LUSSO(12 Cal) S/A Mobile-Choke

Caliber: 12 Gauge

Serial Number: G11855E

Barrel Length: 28 inches

Chamber Size: 3 inch

(76mm) / Magnum

Choke System: Mobile-
Chokes (1, 2, 3, 4)

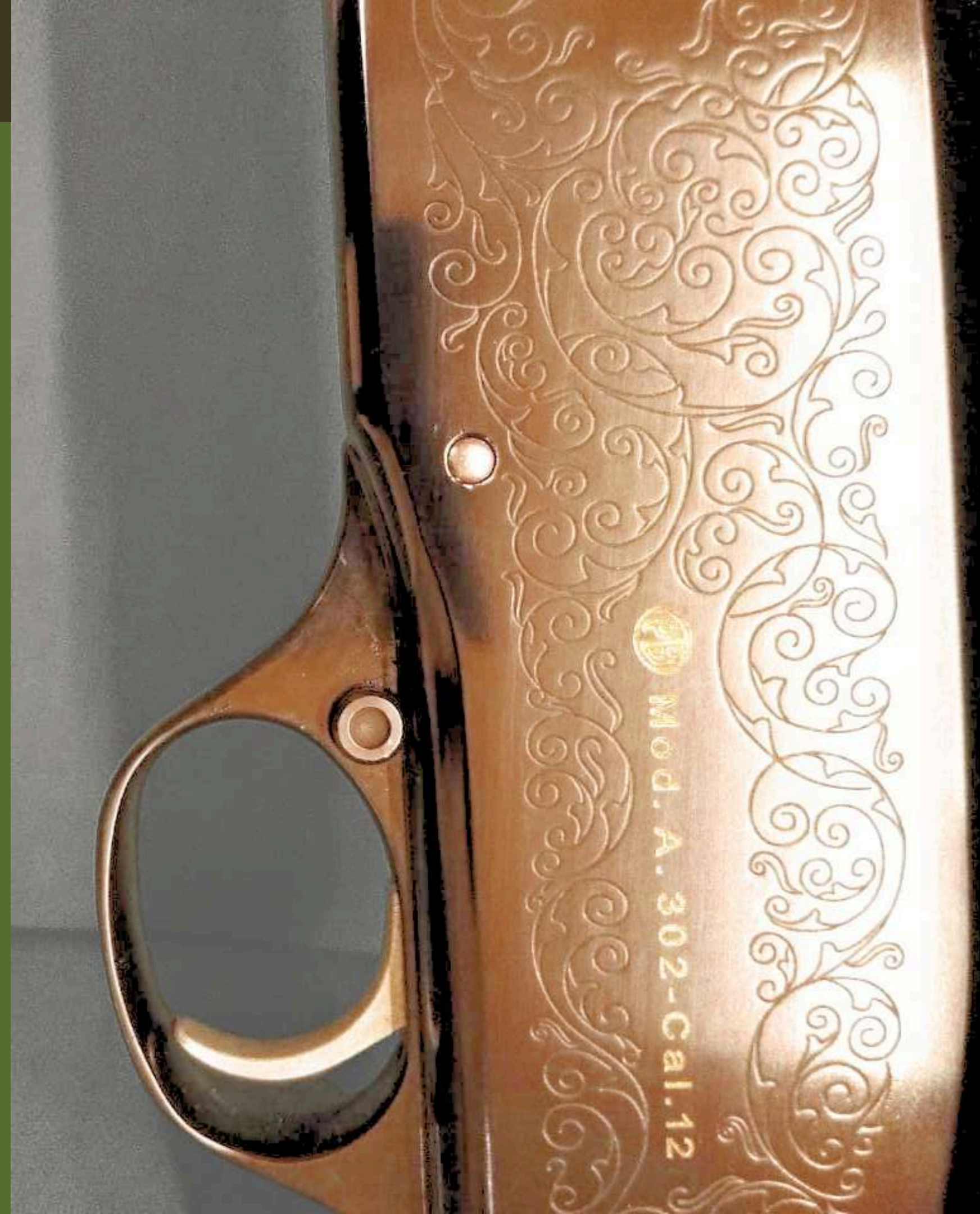
Year of Manufacture: 1988



A-302-Lusso Mobile- chokes

Gas-Assisted Cycling:

The A302 features an advanced gas-operated system that utilizes the energy from each shot to cycle the action smoothly and reliably, promoting consistent shell feeding and minimizing the risk of misfires.





Beretta A302-Lusso-Mobile Chokes

Stock & Ergonomics

The shotgun is fitted with a premium walnut stock, expertly crafted with ergonomic checkering to enhance grip, comfort, and overall balance. Engineered to absorb recoil efficiently, the stock maintains the timeless aesthetic that defines Beretta's traditional design.

Precision Machining

High-precision machining of critical components—including the gas system, barrel, and drop-in choke assembly—ensures tight tolerances and optimal performance. Complementing this, hand-finishing techniques such as detailed bluing and engraving enhance both functional reliability and aesthetic refinement.

Muzzle Velocity & Chokes

The interchangeable choke system allows for precise optimization of shot patterns—ranging from tight groupings for long-range accuracy to wider spreads for close-range engagements. The integrated tubular magazine typically holds three shells, with an additional round chambered, providing reliable capacity for successive shots.



A-302-Lusso Mobile- chokes

The Beretta A302 - Cal. 12 with Choke exemplifies refined Italian firearm engineering, seamlessly blending traditional design with modern innovation. Its gas-assisted semi-automatic action, paired with a user-friendly Mobilchoke system, delivers outstanding reliability and adaptability across various shooting conditions



A-302 (12 Cal) S/A Mobile-Choke

Caliber: 12 Gauge

Serial Number: F 744012E

Barrel Length: 28 inches

Chamber Size: 2-3/4inch
(70mm)

Choke System: Mobile-
Chokes (1, 2, 3)

Year of Manufacture: 1988

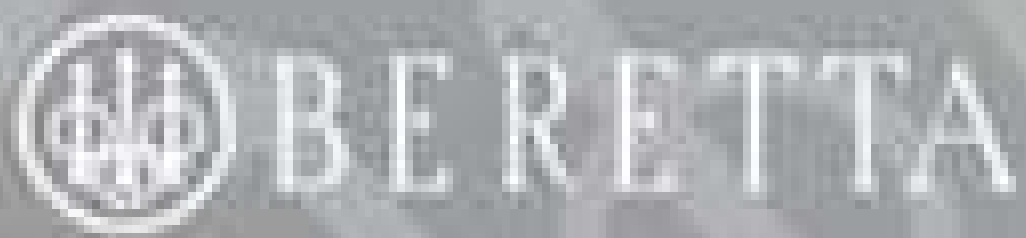


A-302--S/A CAL12-Mobilchoke

Gas-Assisted Cycling:

The A302 features a refined gas-operated mechanism that harnesses the energy from each shot to cycle the action smoothly, ensuring consistent shell feeding and minimizing misfires.





Beretta A302 – Semi-Automatic | Cal. 12 | Mobilchoke

Stock & Ergonomics

The shotgun features a premium walnut stock, elegantly shaped and finished with ergonomic checkering to enhance grip, balance, and shooting comfort. Engineered to absorb recoil effectively, the stock also upholds the timeless visual identity characteristic of Beretta's traditional craftsmanship.

Precision Machining

High-precision machining of critical components—including the gas system, barrel, and drop-in choke assembly—ensures tight tolerances and optimal performance. Hand-finishing steps, such as detailed bluing and fine engraving, further enhance both the functional integrity and aesthetic value of the firearm.

Muzzle Velocity & Chokes

The interchangeable choke system ensures optimal performance across various shooting scenarios—providing tight patterns for long-range precision or wider spreads for close-range targets.

The integrated tubular magazine typically accommodates three shells, with the option to chamber an additional round, offering a total capacity of four shots.



Beretta A302 - Semi-Automatic | Cal. 12 | Mobilchoke

The Beretta A302 - Cal. 12 with Choke exemplifies refined Italian firearm engineering, blending timeless design with modern technological innovation. Its gas-assisted semi-automatic mechanism, paired with a user-friendly Mobilchoke system, provides shooters with both reliability and field versatility.



A-301 (12 Cal) S/A Mobile-Choke

Caliber: 12 Gauge

Serial Number: B25885E

Barrel Length: 26 inches

Chamber Size: 2-3/4inch
(70mm)

Choke System: Mobile-
Chokes (1, 2, 3)

Year of Manufacture: 1980



A-301-S/A CAL12-Mobilchoke

Gas-Assisted Cycling:

The A301 features a refined gas-operated mechanism that harnesses the energy from each shot to cycle the action smoothly, ensuring consistent shell feeding and minimizing misfires.



A-301 – S/A 12 Gauge with Mobilchoke System

Stock & Ergonomics

The shotgun features a premium walnut stock, meticulously crafted with ergonomic checkering to enhance grip, comfort, and overall balance. Designed to absorb recoil efficiently, the stock also delivers the timeless aesthetic that is emblematic of Beretta's craftsmanship.

Precision Machining

High-precision machining of critical components—including the gas system, barrel, and drop-in choke assembly—ensures tight tolerances and optimal performance. Hand-finishing techniques, such as detailed bluing and engraving, further enhance both the functionality and aesthetic appeal of the shotgun.

Muzzle Velocity & Chokes

The interchangeable choke system allows for optimal shot performance—offering tight patterns for long-range targets or wider spreads for close-range encounters. The integrated tubular magazine is typically configured to hold three shells, plus one in the chamber, ensuring readiness for multiple follow-up shots.



A-301-S/A CAL12-Mobilchoke

The Beretta A301 - Cal. 12 with Mobilchoke exemplifies Italian firearm craftsmanship, blending timeless design with modern innovation. Its gas-assisted semi-automatic action, paired with a user-friendly Mobilchoke system, delivers reliable cycling and adaptable performance for various shooting conditions.



A-301 (20Cal) S/A Mobile-Choke

Caliber: 20 Gauge

Serial Number: 0-398435

Barrel Length: 26 inches

Chamber Size: 2-3/4inch
(70mm)

Choke System: fixed -
Chokes (3*)

Year of Manufacture: 1988

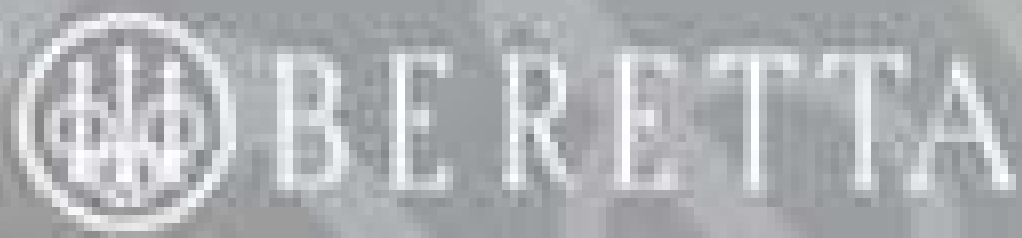


Beretta A-301 - S/A Cal. 20, Fixed Choke (Modified - 3★)

Gas-Assisted Cycling:

The A301 features a refined gas-operated system that harnesses the energy from each shot to cycle the action smoothly, ensuring reliable shell feeding and minimizing misfires.





Beretta A-301 – S/A Cal. 20, Fixed Choke (Modified – 3★)

Stock & Ergonomics

The shotgun features a premium walnut stock, meticulously crafted with ergonomic checkering to enhance grip, comfort, and balance. Designed for both function and form, the stock effectively absorbs recoil while maintaining the timeless aesthetic that defines Beretta's classic style.

Precision Machining

High-precision machining of key components—including the gas system, barrel, and drop-in choke assembly—ensures tight tolerances and reliable performance. Hand-finishing techniques, such as detailed bluing and fine engraving, further enhance both the functional quality and visual appeal of the firearm.

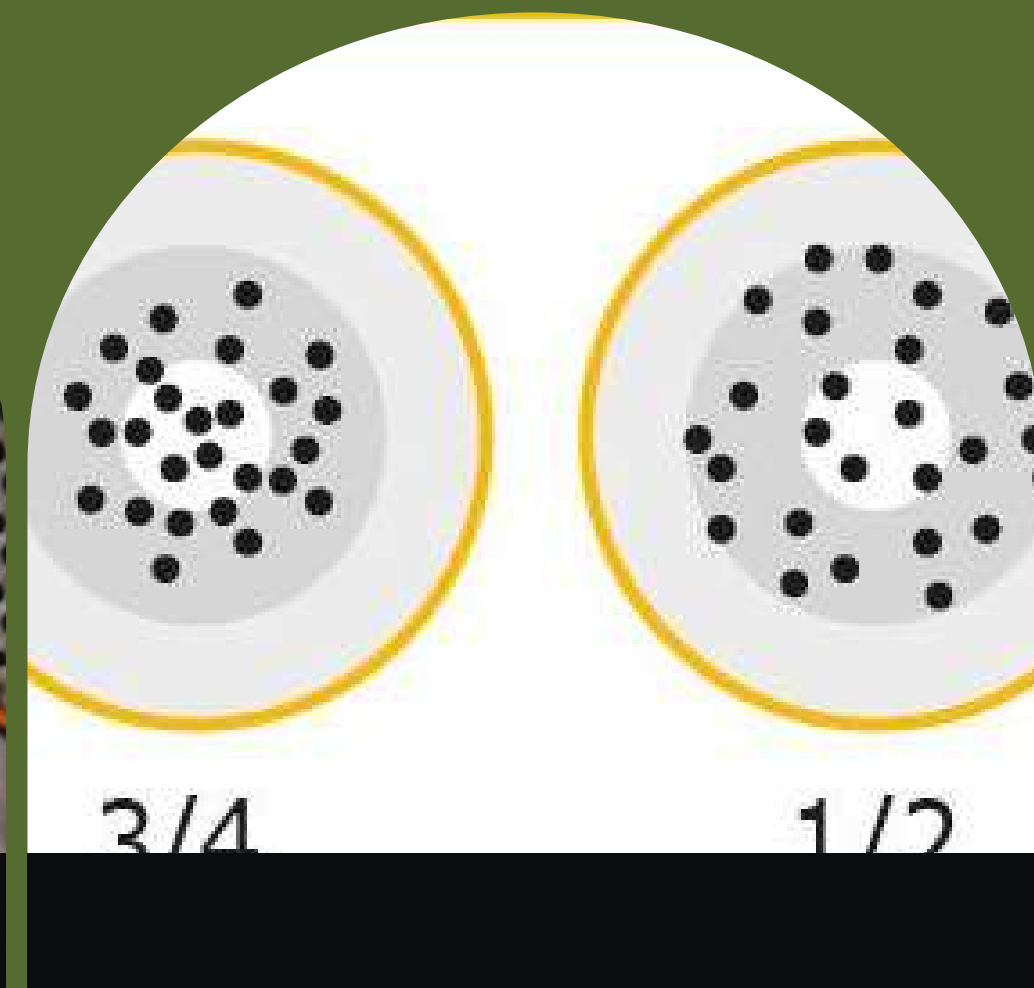
Muzzle Velocity & Chokes

The interchangeable choke system ensures optimal shot performance—delivering tight patterns for long-range precision or wider spreads for close-range targets. The integrated tubular magazine typically holds three shells, plus one in the chamber, providing reliable capacity for multiple follow-up shots.



Beretta A-301 - S/A Cal. 20, Fixed Choke (Modified - 3★)

The Beretta A301 - Cal. 12 with Choke exemplifies Italian craftsmanship by blending timeless design with modern engineering. Its gas-assisted semi-automatic action, paired with an intuitive Mobilchoke system, delivers reliable cycling and adaptable performance across diverse shooting scenarios.



S-685 Light - Cal. 12 (O/U)

Serial Number: 33299

Barrel Length: 28 inches

Chamber Size: 2¾ inch
(70mm)

Choke Configuration:

Fixed Chokes – Full /
Modified (1/3)

Year of Manufacture: 85



S-685 LIGHT CAL/12 (O/U) (1★ / 3★)

Mechanism & Trigger System

Finish: Light alloy receiver with steel inserts, polished blued barrels, and a hand-oiled walnut stock

Trigger: Single selective, gold-plated trigger

Safety: Manual safety with integrated barrel selector

Ejectors: Automatic ejectors

Stock: Select-grade walnut with fine checkering for grip and aesthetic appeal



S-685 LIGHT CAL/12 (O/U) Fixed-Choke F/M(1★ / 3★)

Stock & Ergonomics

CNC-machined components ensure precise tolerances and consistent performance.
Stock is hand-fitted and finely checkered for enhanced ergonomics and visual appeal.
Each trigger group is individually tuned during assembly to guarantee crisp and reliable operation.

Operating System

Over & Under break-action mechanism for classic handling and easy operation.
Single selective gold-plated trigger allows for rapid and reliable follow-up shots.
Manual safety with integrated barrel selector provides enhanced shooter control and versatility.

Historical Context

Introduced as part of Beretta's versatile 680 series, the S685 Light was designed specifically for upland and field hunting. It offers an ideal balance between lightweight handling and rugged performance. Manufactured during the late 1980s through the 1990s, it remains a highly regarded example of Beretta's craftsmanship and engineering precision.



S-685 LIGHT CAL/12 (O/U) Fixed-Choke F/M(1★ / 3★)

The Beretta S685 Light - Cal. 12 exemplifies Italian shotgun engineering, combining a robust action with a lightweight frame. Designed for both performance and elegance, it remains a trusted field companion and a prized piece in any discerning collector's cabinet.



**S56E - Cal. 12 (O/U) - Fixed
Choke F/M (1★ / 3★)**

Serial Number: B52306B

Barrel Length: 28 inches

**Chamber Size: 2¾ inch
(70mm)**

Choke Configuration:

**Fixed Chokes – Full /
Modified (1★ / 3★)**

Year of Manufacture: 78



S56E - Cal. 12 (O/U) - Fixed Choke F/M (1★ / 3★)

Mechanism & Trigger System

The shotgun features a classic break-action, box-lock mechanism typical of over-under designs. An integrated automatic ejector system facilitates rapid shell ejection for quicker follow-up shots. The selective dual-trigger system, enhanced by precision internal machining, allows for faster reset and smoother operation.





S56E - Cal. 12 (O/U) - Fixed Choke F/M (1★ / 3★)

Stock & Ergonomics

The S56E stands out with a satin chrome-engraved action, offering an ornate, high-end aesthetic. It is paired with a select-grade walnut stock, expertly contoured to enhance ergonomics and ensure consistent reliability during extended shooting sessions.

Precision Machining

A combination of traditional hand-fitting and period-advanced machining, the S56E was produced with enhanced finishing techniques—evident in its engraved action and precisely integrated automatic ejector system. These refinements elevated both the shotgun's performance and its visual and tactile appeal.

Side Rib Configuration

The addition of side ribs on the S56E's barrels enhances structural integrity and promotes a more consistent recoil impulse, contributing to improved shot-to-shot stability and durability.

S56E - Cal. 12 (O/U) - Fixed Choke F/M (1★ / 3★)

The Beretta S56E is a refined evolution within the S series, produced from the mid-1950s to early-1970s. Designed as an improvement over earlier models, it incorporates upgraded aesthetics and added features aimed at enhancing competitive performance.



Beretta S55 - Cal. 20 (O/U)

Serial Number:

Barrel Length: 28 inches

Chamber Size: 2¾ inch
(70mm)

Choke Configuration:

Fixed Chokes – Full /
Modified (1★ / 3★)

Year of Manufacture: 65

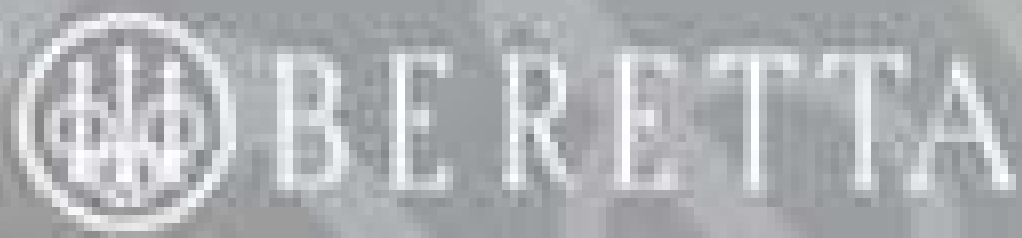


Beretta S55 - Cal. 20 (O/U) Fixed Choke F/M - 1/3★

Mechanism & Trigger System

The S55 features a traditional box-lock break-action mechanism, known for its reliability and simplicity. It incorporates a manual ejector system, allowing shooters to remove spent shells at their discretion. A selective dual-trigger setup, enhanced through precision internal machining, enables faster reset times and smoother operation between shots.





Beretta S55 - Cal. 20 (O/U) Fixed Choke F/M - 1/3★

Stock & Ergonomics

The S55 distinguishes itself with a satin chrome, lightly engraved action, offering an elegant, high-end aesthetic. It is paired with a select-grade walnut stock, meticulously contoured to enhance ergonomics and ensure reliable handling during extended shooting sessions.

Craftsmanship & Engineering

The S55 combines traditional hand-fitting with period-advanced machining, resulting in exceptional mechanical harmony. Enhanced finishing techniques—seen in the engraved action and the precise integration of ejector components—contribute to both performance and aesthetic refinement, elevating the shotgun's functional reliability and visual appeal.

Rib Configuration

The S55 is equipped with high-quality blued barrels and a ventilated rib, enhancing heat dissipation, sight alignment, and balance. The durable, corrosion-resistant finish ensures consistent bore integrity, while the rib reduces barrel mirage—offering both performance and refined aesthetics for extended field use.



Beretta S55 - Cal. 20 (O/U) Fixed Choke F/M - 1/3★

The Beretta S55 is a refined evolution within the S series, produced from the mid-1950s to early-1970s. As an advancement over earlier models, it introduced improved aesthetics and functional upgrades, laying the foundation for later variants like the S56E, which emphasized enhanced finish and competitive shooting features.



Beretta S55 - Cal. 12 (O/U)

Serial Number: 125495

Barrel Length: 28 inches

**Chamber Size: 2¾ inch
(70mm)**

Choke Configuration:

**Fixed Chokes – Full /
Modified (1★ / 3★)**

Year of Manufacture: 60

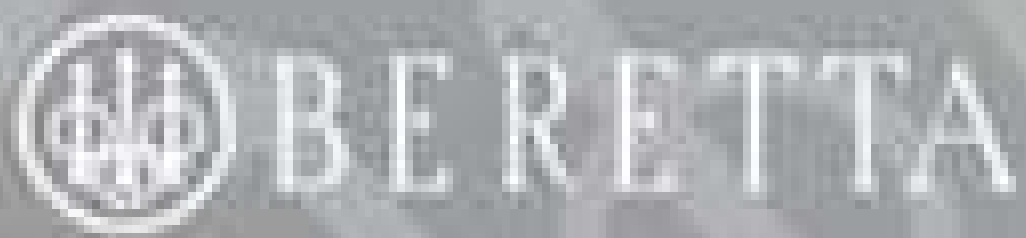


S 55 - Cal. 12 (O/U) Fixed-Choke F/M - 1/3★

Stock & Craftsmanship

The Beretta S55 is equipped with a durable box-lock mechanism, providing robust performance typical of Beretta's over/under shotguns. It features a manual ejector system that allows the shooter to control shell removal, useful during extended sessions or for preserving spent shells. The selective dual-trigger system enables the shooter to choose which barrel fires first.





S 55-CAL/12(O/U) Fixed-Choke F/M-1/3*

Stock & Ergonomics

The Beretta S55 features a satin chrome action with light engraving, lending it a refined and upscale aesthetic. Paired with a select-grade walnut stock, the shotgun is ergonomically contoured to provide improved handling and sustained comfort during long shooting sessions, combining classic styling with reliable field performance.

Precision Machining

The Beretta S55 combines traditional hand-fitting with period-appropriate machining techniques, resulting in a shotgun of refined craftsmanship. Enhanced finishing methods—most notably the engraved action and precise integration of ejector components—elevate both function and form.

Rib Configuration

The S55 is equipped with blued, ventilated rib barrels that promote consistent bore alignment and enhance durability during extended use. The bluing provides corrosion resistance, while the ventilated rib aids in heat dissipation and improved sighting, contributing to the shotgun's balanced handling and field reliability.



S 55-CAL/20(O/U) Fixed-Choke F/M-1/3*

The Beretta S5 represents a refined evolution within the S series, manufactured from the mid-1950s through the early-1970s. As an advancement over earlier models, the S56E integrates upgraded aesthetics and performance-oriented enhancements, making it well-suited for both discerning sportsmen and competitive shooters seeking reliability and elegance



Monobloc - Cal. 20 (SxS)
Fixed-Choke F/M - 1/3★

Serial Number: 83407
Barrel Length: 28 inches
Chamber Size: 2¾ inch
(70mm)
Choke Configuration:
Fixed Chokes - Full /
Modified (1★ / 3★)
Year of Manufacture: 47



Monobloc - Cal. 20 (SxS) Fixed-Choke F/M - 1/3★

Stock & Craftsmanship

The integrated monobloc construction ensures both barrels are machined and fitted as a unified block, enhancing structural integrity and maintaining precise barrel alignment—critical for consistent shot convergence.

The shotgun features a well-tuned dual-trigger system, allowing smooth, independent firing of each barrel .



Monobloc – Cal. 20 (SxS) Fixed-Choke F/M – 1/3★

Stock & Ergonomics

An integrated manual safety catch, paired with the optimized balance of the monobloc frame and 20-gauge chambering, contributes to reduced felt recoil and improved shooter comfort. This configuration is especially beneficial during extended field use, offering better control and fatigue reduction.

Barrel Material

The barrels are precision-forged from high-grade tool steel and integrated into a single monobloc unit, ensuring consistent internal geometry and superior durability under high-pressure loads

Barrel Steel Composition

the Beretta are precision-forged from chromium-molybdenum (Cr-Mo) alloy steel, a material renowned for its exceptional strength, resistance to high pressures, and durability. This alloy, commonly used in military and aerospace-grade applications, offers a superior balance of tensile strength and elasticity



Monobloc - Cal. 20 (SxS) Fixed-Choke F/M - 1/3★

The Beretta Side-by-Side Monobloc - Cal. 20 stands as a superb example of the fusion between classic design and modern engineering. Its integrated monobloc barrel assembly, refined manufacturing techniques, and timeless aesthetic—combined with the inherent benefits of the 20-gauge cartridge—make it both a dependable sporting firearm and a collector's favorite.



Monobloc - CAL/28 (Single Barrel) Fixed-Choke 1★

Serial Number: 83407

Barrel Length: 28 inches

Chamber Size: 2¾ inch
(70mm)

Choke Configuration:

Fixed Chokes – Full (1★)

Year of Manufacture:

1945



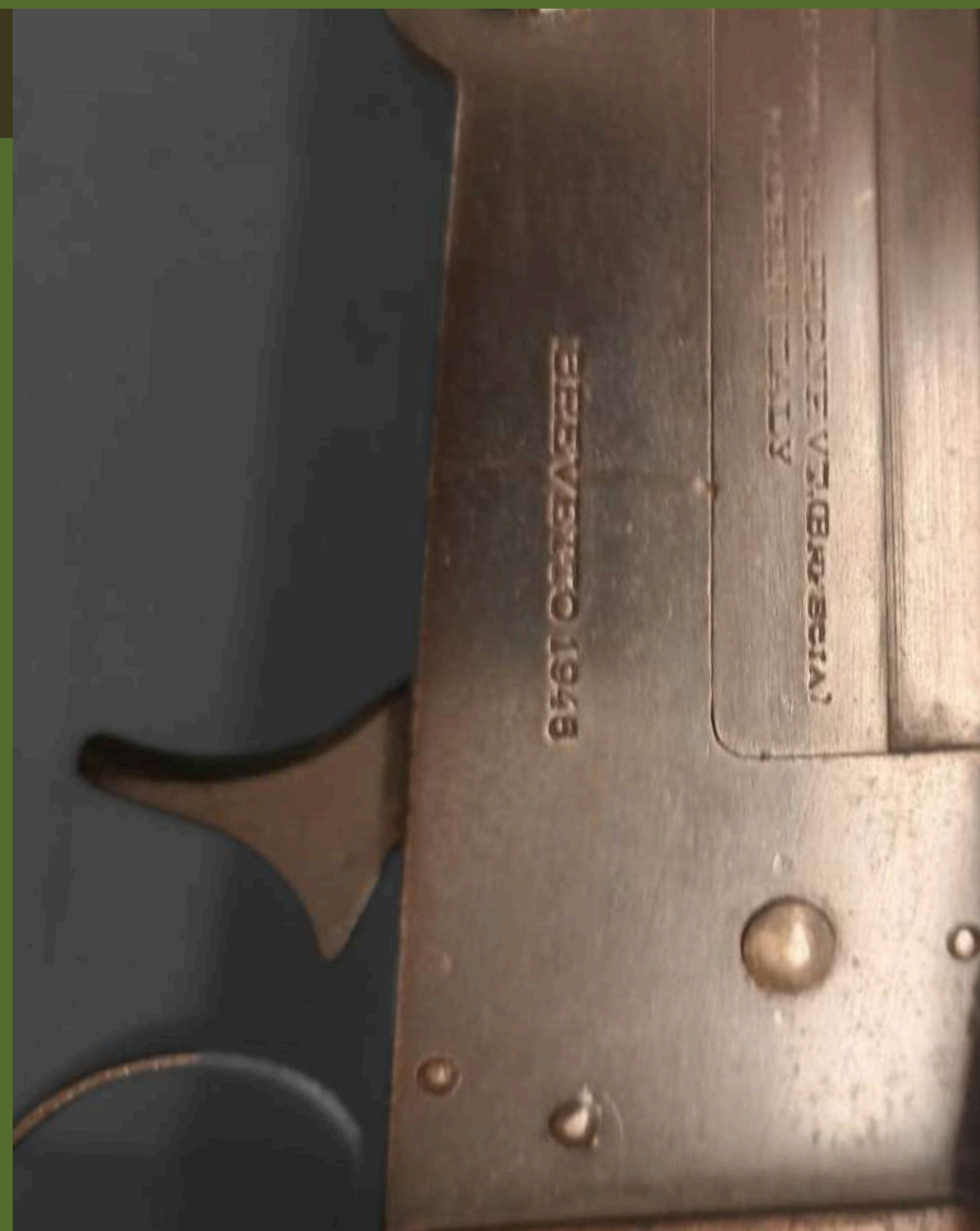
Monobloc - CAL/28 (Single Barrel) Fixed-Choke 1★

Craftsmanship & Finish:

Fitted with a select-grade walnut stock featuring hand-cut checkering for enhanced grip and aesthetics.

Precise metal-to-wood integration achieved through traditional hand-fitting techniques.

The monobloc section is often hand-engraved or individually polished, reflecting artisanal attention to detail.





Monobloc – CAL/28 (Single Barrel) Fixed-Choke 1★

Operating system

- Single-barrel, break-action configuration.
- Manual top-lever opening mechanism.
- Equipped with a single mechanical trigger ensuring consistent and reliable discharge.

Unique Calibration

- Optimized for 28-gauge shells, providing an ideal balance between velocity and manageable recoil.
- Precision-machined breech and locking system ensure secure lock-up and consistent shot alignment.

Choke Configuration

- Deep-blued, high-grade steel barrel ensures strength and corrosion resistance.
- Fixed 1-star choke (Full), optimized for tighter shot patterns at longer ranges.
- Engineered to provide excellent pellet density and uniform spread.

Monobloc – CAL/28 (Single Barrel) Fixed-Choke 1★

The Monobloc CAL. 28 is a lightweight, precision-engineered field shotgun, purpose-built for small game and upland bird hunting. Favored by European hunters during the 1970s and 1980s, it earned a reputation for its elegant simplicity and superb balance.



 **Benelli**
simply perfect





- 1. SUPER-90 (12Cal) S/A-M-chokes**
- 2. MontefeltroSuper-90 (20 Cal) S/A M-Extended Chokes**
- 3. SL-121 (12 Cal) S/A -St-Etian Barrel**
- 4. SL80-123 (12Cal) S/A -St-Etian Barrel**

Super 90 - Cal. 12 (S/A) Mobilchoke System

Serial Number:

Barrel Length: 26 inches

Chamber Size: 2¾ inch
(70mm)

Choke System: Mobil-
choke – Chokes 1, 2, 3

Year of Manufacture: 92



Super 90 - Cal. 12 (S/A) Mobilchoke System

Inertia-driven semi-automatic action

Eliminates the need for a gas system or complex piston components. The rotating bolt head locks directly into the barrel extension, providing a secure lock-up and rapid cycling. This recoil-operated design ensures cleaner operation, reduced fouling, and consistent reliability across a wide range of loads.



Benelli
Super 90
Lusso

Super 90 - Cal. 12 (S/A) Mobilchoke System

Barrel Material

High-grade, chrome-lined steel barrel with internally polished bore, ensuring excellent corrosion resistance and superior shot patterning.

Machining & Hand-Finishing

Action and bolt group are CNC-machined to precise tolerances.
-Bolt and barrel extension are hand-fitted for uniform lock-up and reliability.
Trigger groups are bench-tested and tuned for consistent pull weight and smooth travel.

Stock & Ergonomics:

Oil-finished walnut stock or field-grade polymer stock, depending on configuration and region of distribution. The long, narrow forend is designed for intuitive pointing and smooth swing. A high-density rubber recoil pad helps reduce shoulder impact during extended shooting sessions.

Super 90 - Cal. 12 (S/A) Mobilchoke System

The Benelli Super 90 - Cal. 12 stands as a benchmark in modern shotgun design. Famed for its ultra-reliable inertia-driven system, modular Mobilchoke compatibility, and robust build quality, it remains a trusted choice among hunters, sport shooters, and tactical users alike. A true testament to Italian engineering, the Super 90 blends durability, precision, and timeless performance.



Monte-Super 90 - Cal. 20 (S/A) Mobilchoke

Serial Number: N080086

Barrel Length: 26 inches

Chamber Size: 3 & 2¾ inch
(76mm) Magnum

Choke System: Mobil-
choke – Chokes 2

Year of Manufacture:
2004



Monte-Super 90 - Cal. 20 (S/A) Magnum-Mobilchoke

Inertia-driven semi-automatic action

Eliminates the need for a gas system or complex piston components. The rotating bolt head locks directly into the barrel extension, providing a secure lock-up and rapid cycling. This recoil-operated design ensures cleaner operation, reduced fouling, and consistent reliability across a wide range of loads.



Benelli
Forgi Davide &
Luca Spadaro



Monte-Super 90 - Cal. 20 (S/A) Magnum-Mobilchoke

Barrel Material

High-grade, chrome-lined steel barrel with internally polished bore, ensuring excellent corrosion resistance and superior shot patterning.

Machining & Hand-Finishing

Action and bolt group are CNC-machined to precise tolerances.
-Bolt and barrel extension are hand-fitted for uniform lock-up and reliability.
Trigger groups are bench-tested and tuned for consistent pull weight and smooth travel.

Stock & Ergonomics:

Oil-finished walnut stock or field-grade polymer stock, depending on configuration and region of distribution. The long, narrow forend is designed for intuitive pointing and smooth swing. A high-density rubber recoil pad helps reduce shoulder impact during extended shooting sessions.

Monte-Super 90 - Cal. 20 (S/A) Magnum-Mobilchoke

The Benelli Montefeltro Super 90 - Cal. 20 stands as a benchmark in modern shotgun design. Famed for its ultra-reliable inertia-driven system, modular Mobilchoke compatibility, and robust build quality, it remains a trusted choice among hunters, sport shooters, and tactical users alike. A true testament to Italian engineering, the Super 90 blends durability, precision, and timeless performance.



SL80-123 - Cal. 12 / IM
Choke (★ ★)

Serial Number: 202896
Barrel Length: 30 inches
Chamber Size: 2¾ inch (70mm)
Choke Configuration:
Fixed – IM Choke (2★)
Year of Manufacture:
1979



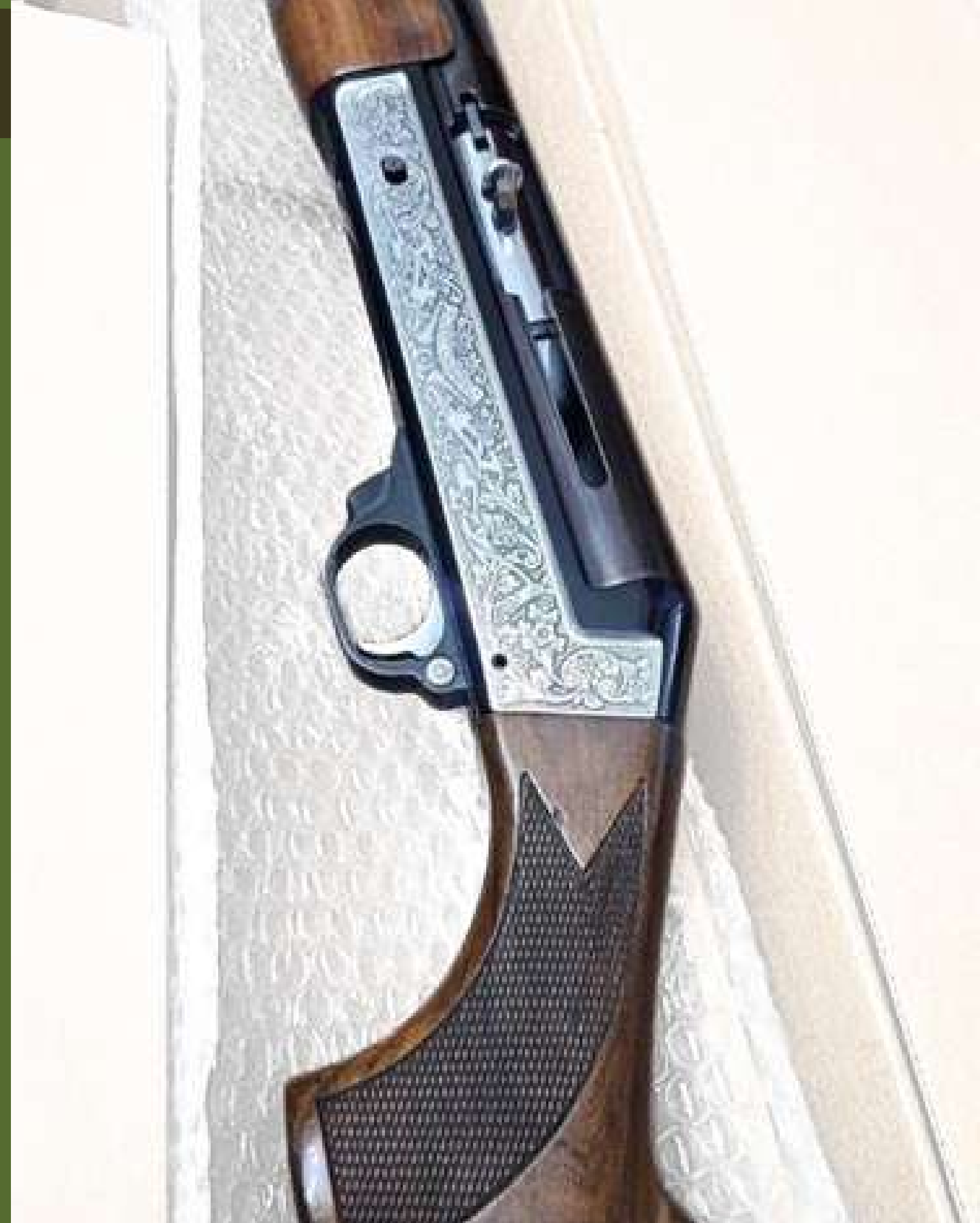
SL80-123 - Cal. 12 / IM Choke (★ ★)

Stock & Craftsmanship

Matte blued receiver paired with a polished barrel, featuring clean, minimalistic lines.

SL80-123 designation engraved on the receiver; some variants include subtle embellishments.

Chambered to accept both 70mm (2¾") and 76mm (3") shells for added versatility.





SL80-123 – Cal. 12 / IM Choke (★ ★)

Operating system

**Inertia-driven semi-automatic action, pioneered by Benelli, ensures cleaner operation and minimal maintenance.
Delivers smooth, reliable cycling across a broad range of 12-gauge loads without requiring manual adjustments.**

Machining & Fit

**High-tolerance CNC machining ensures precise, consistent performance and reliable cycling under various conditions.
Hand-fitted locking head and bolt assembly reflect the attention to detail in early production models, enhancing lock-up strength and longevity.
Manually polished Saint Étienne barrel contributes to smooth internal ballistics and uniform shot patterns, preserving accuracy and barrel life.**

Saint Étienne Barrel

**Manufactured in the historic French gun-making region of Saint-Étienne, renowned for producing precision-engineered barrels.
Exceptional internal bore finish enhances shot consistency, durability, and resistance to wear, especially under repeated use.**

SL80-123 - Cal. 12 / IM Choke (★ ★)

The Benelli SL80-123 belongs to the pioneering generation of Benelli's inertia-driven semi-automatic shotguns, introduced during the 1970s and 1980s. This series marked a significant advancement in shotgun engineering, replacing traditional gas systems with Benelli's innovative inertia mechanism—renowned for its simplicity, reliability, and reduced maintenance requirements.



**Benelli 121 - Cal. 12 /
Modified Choke (★ ★ ★)**

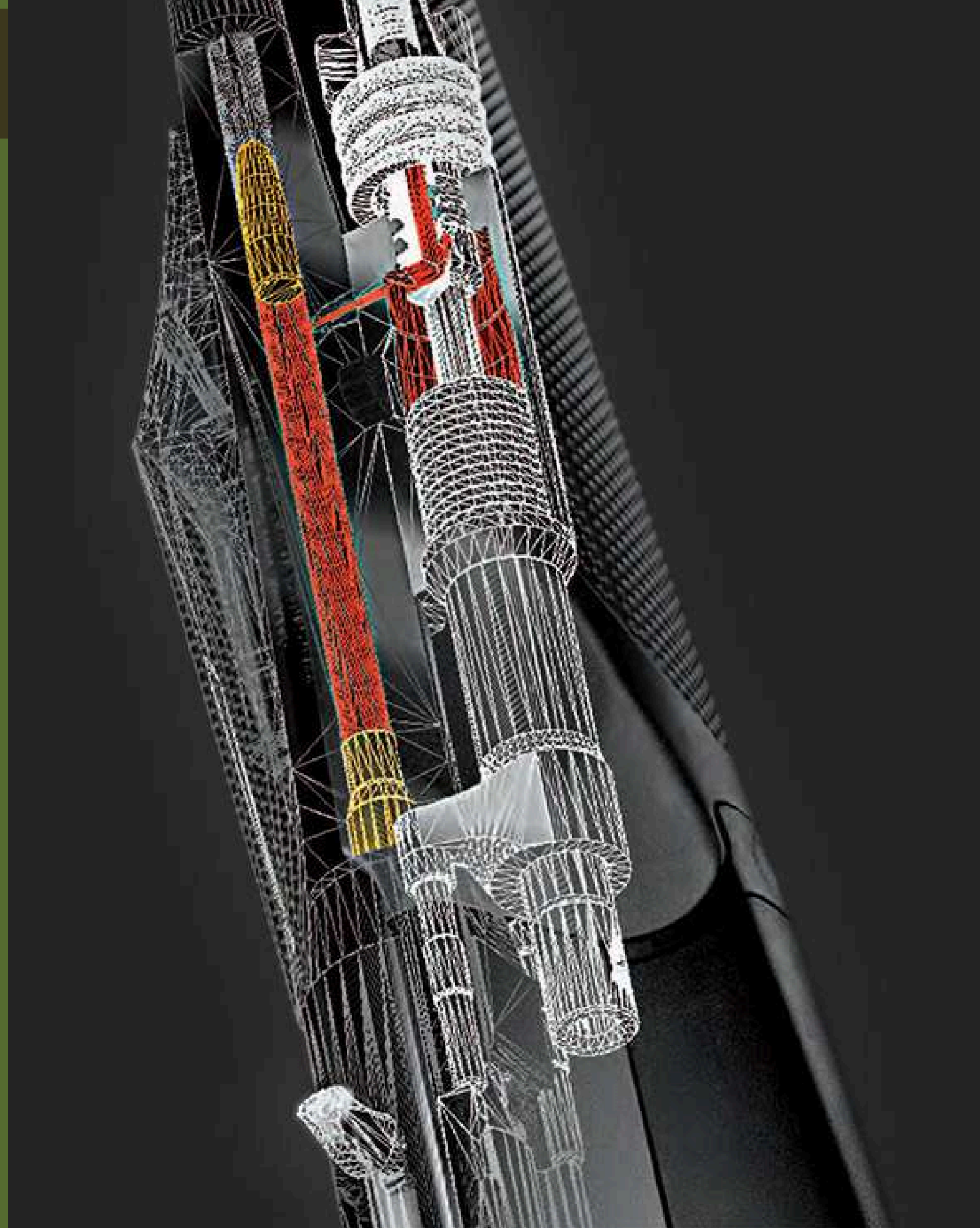
Serial Number: 110550
Barrel Length: 30 inches
Chamber Size: 2¾ inch
(70mm)
Choke Configuration:
Fixed – IM Choke (2★)
Year of Manufacture:
1981



Benelli 121 - Cal. 12 / Modified Choke (★ ★ ★)

Stock & Craftsmanship

The shotgun features a select walnut stock, hand-checkered for enhanced grip and aesthetics. Traditional hand-fitting techniques ensure precise metal-to-wood alignment, while the monobloc section is often hand-engraved or polished, reflecting premium artisanal craftsmanship.





Benelli 121 - Cal. 12 / Modified Choke (★ ★ ★)

Operating system

- Inertia-driven semi-automatic system ensures clean, reliable operation with fewer moving parts.
- Delivers fast cycling and reduced maintenance compared to traditional gas-operated shotguns.

Machining & Fit

- Internal action components are CNC-machined to high tolerances for precise performance.
- Original production featured hand-fitted locking head and bolt assembly.
- Saint Étienne barrel manually polished to ensure optimal internal ballistics.

Saint Étienne Barrel

- Manufactured in the historic French gun-making region of Saint-Étienne, renowned for its precision barrel craftsmanship.
- Features an exceptional internal finish, optimized for consistent shot patterns and long-term durability.

Benelli 121 - Cal. 12 / Modified Choke (★ ★ ★)

The Benelli 121 stands as a pivotal development in the history of semi-automatic shotguns. Introduced in the early 1970s, it marked Benelli's first major entry into the world of high-performance auto-loading firearms. Celebrated for its rugged reliability, fast cycling, and simplicity of operation.





BROWNING®

S-1



BROWNING®

- 1. Browning B25 A1 - Cal. 12 (O/U)**
- 2. Browning Auto-5 - Cal. 12 (S/A)**
- 3. Browning Auto-5 Super Lightweight - Cal. 12 (S/A)**
- 4. Browning B-80 - Cal. 12 (S/A)**
- 5. Browning Gold - Cal. 12 (S/A)**
- 6. Browning Gold - Cal. 20 (S/A)**

**Browning B25 A1 - Cal. 12
(O/U) - Fixed Choke:
Full/Modified (1★ / 3★)**

Serial Number: SS40666
Barrel Length: 30 inches
Chamber Size: 2¾ inch (70mm)
Choke Configuration: Fixed
Chokes - Full / Modified (1★ /
3★)
Year of Manufacture: 1964



BROWNING FN HERSTAL



Browning B25 A1 - Cal. 12 (O/U) - Fixed Choke: Full/Modified (1★ / 3★)

The Browning B25—also known as the Superposed—is more than just a shotgun; it represents a legacy of innovation, master craftsmanship, and rich shooting heritage. The B25 A1 is one of the most esteemed variants in the series, produced at Fabrique Nationale d'Herstal (FN) in Belgium. Each B25 is hand-built by FN's master gunsmiths.



BROWNING FN HERSTAL



Browning B25 A1 - Cal. 12 (O/U) - Fixed Choke: Full/Modified (1★ / 3★)

The A1 grade is one of the earlier field configurations, prized for its timeless design and reliable field performance. This specific B25 A1 features the "Round Knob Long Tang" stock configuration—a design hallmark of pre-1960s models—valued for its improved wrist ergonomics and classic handling characteristics.



BROWNING FN HERSTAL



Browning B25 A1 - Cal. 12 (O/U) - Fixed Choke: Full/Modified (1★ / 3★)

Key Craftsmanship Features

Each B25 undergoes over 100 hours of labor, distributed across six specialized craftsmen: stockmaker, engraver, action filer, barrel fitter, checker, and polisher.

Barrel regulation is done manually using custom jigs and refined through live test-firing. Triggers are individually hand-tuned for precise break weight and consistent sear engagement.



BROWNING®



FN HERSTAL





Browning B25 A1 - Cal. 12 (O/U) - Fixed Choke: Full/Modified (1★ / 3★)

Locking & Action Mechanism

Locking Bolt: A robust cross-bolt system engages directly into the barrel breech, ensuring secure lock-up.

Steel-to-Steel Fit: Each action is hand-fitted to its matching barrel set, guaranteeing mechanical harmony and durability.

Barrel Construction

The B25 A1 barrels are crafted from high-tensile strength steel, chrome-lined for durability and corrosion resistance. Forged in-house by FN, each barrel undergoes cold hammer-forging followed by meticulous hand-lapping and honing to ensure exceptional bore uniformity and superior ballistic performance.

Stock & Ergonomic

The B25 A1 features the classic Round Knob Pistol Grip, a hallmark of traditional Browning design that offers enhanced wrist ergonomics and control. Crafted from premium-grade European walnut, the stock is finished with a hand-rubbed oil treatment.



BROWNING FN HERSTAL

Browning B25 A1 - Cal. 12 (O/U) - Fixed Choke: Full/Modified (1★ / 3★)

The A1 model, produced by Fabrique Nationale Herstal (FN) in Belgium, is entirely handcrafted and reflects Browning's commitment to excellence. Distinguished by its round knob pistol grip, this variant embodies mid-century European field traditions and was purpose-built for superior performance in upland bird shooting.



BROWNING



FN HERSTAL

**BROWNING AUTO-5 /
CAL. 12 - Fixed Modified
Choke (2★)**

Serial Number:

Barrel Length: 30 inches

Chamber Size: 2¾ inch
(70mm)

Choke Configuration: Fixed
Chokes - I/ Modified (2★ ★)

Year of Manufacture: 1960



BROWNING FN HERSTAL

BROWNING AUTO-5 / CAL. 12 - Fixed Modified Choke (2★)

The Auto-5

remained a staple in duck blinds, pheasant fields, and even wartime service for over 90 years. Its signature "humpback" receiver not only gave it a distinct silhouette but also extended the sight radius—an innovative feature that enhanced practical aiming and ergonomics.



BROWNING **FN HERSTAL**





BROWNING AUTO-5 / CAL. 12 – Fixed Modified Choke (2★)

Operating system

Magazine Capacity: Typically 4+1
Carrier Latch: Efficiently manages shell loading; the unique shell stop mechanism enhances operational safety and reliability.
Bolt Hold-Open: Absent in original models, but later iterations—particularly Japanese-made versions—introduced this feature for added convenience.



BROWNING

Barrel Material

Forged steel with deep bluing, manufactured to exceptional quality control in FN's Belgian plant .
Chamber pressure tolerance: Rated for standard 2¾" loads, with heavy duck loads requiring recoil ring adjustments.
High-grade walnut stock, often oil-finished and hand-checkered.

Innovations & Mechanism

The Browning Auto-5 operates on a long-recoil mechanism, which was revolutionary at its inception , After firing, the barrel and bolt recoil together before the barrel returns forward. The bolt follows after ejecting the spent shell and chambering the next round



FN HERSTAL

BROWNING AUTO-5 / CAL. 12 - Fixed Modified Choke (2★)

The Browning Auto-5 / Cal. 12 / Fixed Modified Choke exemplifies the perfect fusion of mechanical innovation and traditional craftsmanship. Featuring a proven long-recoil operating system and a timeless design, the Auto-5 is more than just a shotgun—it is a lasting legacy.



BROWNING



FN HERSTAL

**Auto-5 / Cal. 12 / Super
Lightweight / Fixed Full
Choke - 1★**

Serial Number: SS 40666

Barrel Length: 30 inches

Chamber Size: 2¾ inch
(70mm)

Choke Configuration: Fixed
Chokes - Full (1 ★)

Year of Manufacture: 1964



BROWNING FN HERSTAL



**Auto-5 / Cal. 12 / Super Lightweight /
Fixed Full Choke - 1★**

Action & Mechanism

Select walnut stock with hand-cut
checkering

Metal-to-wood fit achieved by
traditional hand-fitting techniques

Monobloc section often hand-
engraved or individually polished



BROWNING FN HERSTAL



Auto-5 / Cal. 12 / Super Lightweight / Fixed Full Choke - 1★

Operating system

-Inertia-driven semi-automatic system, providing cleaner operation compared to gas systems.

Fast cycling with minimal moving parts, reducing maintenance needs.

Machining & Fit

High-tolerance CNC machining on internal action components. Hand-fitted locking head and bolt assembly in original production. Manual polishing of Saint Étienne barrel ensuring smooth internal ballistics.

Saint Étienne Barrel

-Manufactured in the historic French gun-making region of Saint-Étienne, known for its precision barrels.
- Exceptional internal finish, optimized for shot consistency and durability.



BROWNING FN HERSTAL

Auto-5 / Cal. 12 / Super Lightweight / Fixed Full Choke - 1★

The Browning Auto-5 / Cal. 12 / Super Lightweight / Fixed Full Choke exemplifies the fusion of innovative recoil-operated engineering and elegant field design. With its reduced weight, iconic “humpback” profile, and reliable long-recoil action, this model delivers fast handling and consistent performance—an enduring legacy in lightweight upland shotguns.



BROWNING



FN HERSTAL

The Browning B-80 / Cal. 12 / Fixed Modified Choke (3★)

Serial Number:

Barrel Length: 30 inches

Chamber Size: 2¾ inch
(70mm)

Choke Configuration: Fixed
Chokes – Modified (3 ★)

Year of Manufacture: 1982



BROWNING FN HERSTAL

The Browning B-80 / Cal. 12 / Fixed Modified Choke (3★)

Operating System: Gas-Operated

Action Type: Gas-operated, self-compensating system

Mechanism: Diverts a portion of gas from the fired shell to cycle the action

Regulation: Automatically adjusts for varying shell loads (light to heavy)

Bolt Operation: Rotating bolt head with locking lug for secure engagement

Recoil Management: Gas system reduces felt recoil compared to inertia systems

Reliability: Smooth cycling with 2¾" and 3" shells (in magnum models)



BROWNING FN HERSTAL



B-80 CAL-12 FIXED MODIFIED CHOKE 3*

Stock & Finishing

Stock: Select-grade walnut with fine hand-cut checkering, enhancing grip and overall aesthetics.

Fit & Finish: Traditional hand-fitting ensures precise metal-to-wood alignment for superior craftsmanship.

Historical Context

The Browning B-80 blends Beretta engineering with Browning design, featuring a gas-operated system, select walnut stock, and durable craftsmanship—ideal for versatile field use and reliability.

Stock & Ergonomics

Stock: Select-grade walnut with fine hand-cut checkering, enhancing grip and overall aesthetics.

Fit & Finish: Traditional hand-fitting ensures precise metal-to-wood alignment for superior craftsmanship.

Monobloc Detailing: Often hand-engraved or meticulously polished to elevate both functionality and visual appeal.



BROWNING FN HERSTAL

B-80 CAL-12 FIXED MODIFIED CHOKE 3*

The result of a strategic collaboration between Browning and Beretta
Built on Beretta's proven gas-operated action A-300 series the B-80
incorporated Browning's design aesthetics, branding, and field-oriented
refinements. Manufactured in Italy, it combined Beretta's engineering
precision with Browning's legacy of durability and handling.



BROWNING



FN HERSTAL

Browning Gold - Cal. 12 with Mobilchoke System

Serial Number: K11NW04342

Barrel Length: 30 inches

Chamber Size: 2¾ inch
(70mm)

Choke Configuration:

Mobile- choke - Choke 3
(Modified)

Year of Manufacture: 1994



BROWNING FN HERSTAL



Browning Gold - Cal. 12 with Mobilchoke System

The Browning Gold :

Developed as the successor to the legendary Auto-5 series. It marked Browning's shift from the recoil-operated system to a gas-operated design, offering reduced felt recoil and greater load versatility. The model was engineered under the FN Herstal umbrella.



BROWNING FN HERSTAL





Browning Gold - Cal. 12 with Mobilchoke System

Speed Loading Mechanism

A unique Browning innovation, the Speed Load system enables the first shell to be inserted directly into the magazine tube, where it is automatically chambered for rapid reloading.

Barrel Material

Precision-forged, chrome-lined steel barrel ensures high durability and resistance to corrosion. The bore is mirror-polished to enhance consistency and ease of cleaning. Barrel Forging: Cold-hammer forged barrels ensure concentric bores and superior pressure resistance

Receiver

Constructed from aircraft-grade aluminum alloy, contributing to significant weight reduction while maintaining structural strength



BROWNING FN HERSTAL

Browning Gold - Cal. 12 with Mobilchoke System

The Browning Gold 12 Gauge represents the turning point between classic recoil-operated traditions and modern gas-driven semi-autos. With reliable cycling, elegant design, and shooter-friendly ergonomics, it remains a respected and capable shotgun. Whether as a working gun or a collectible piece of Browning engineering history,



BROWNING



FN HERSTAL

Browning Gold - Cal. 20 with Mobilchoke System

Serial Number: K61NT05578

Barrel Length: 30 inches

Chamber Size: 2¾ inch
(70mm)

Choke Configuration:

Mobile- choke - Choke 3
(Modified)

Year of Manufacture: 1996



BROWNING FN HERSTAL



Browning Gold - Cal.20 with Mobilchoke System

The Browning Gold :

Developed as the successor to the legendary Auto-5 series. It marked Browning's shift from the recoil-operated system to a gas-operated design, offering reduced felt recoil and greater load versatility. The model was engineered under the FN Herstal umbrella.



BROWNING FN HERSTAL





Browning Gold – Cal.20 with Mobilchoke System

Speed Loading Mechanism

A unique Browning innovation allowing quick reloading by inserting the first shell directly into the magazine tube and having it automatically chambered.

Barrel Material

Precision-forged, chrome-lined steel barrel ensures high durability and resistance to corrosion. The bore is mirror-polished to enhance consistency and ease of cleaning.
Barrel Forging: Cold-hammer forged barrels ensure concentric bores and superior pressure resistance

Receiver

Constructed from aircraft-grade aluminum alloy, contributing to significant weight reduction while maintaining structural strength



BROWNING FN HERSTAL

Browning Gold - Cal.20 with Mobilchoke System

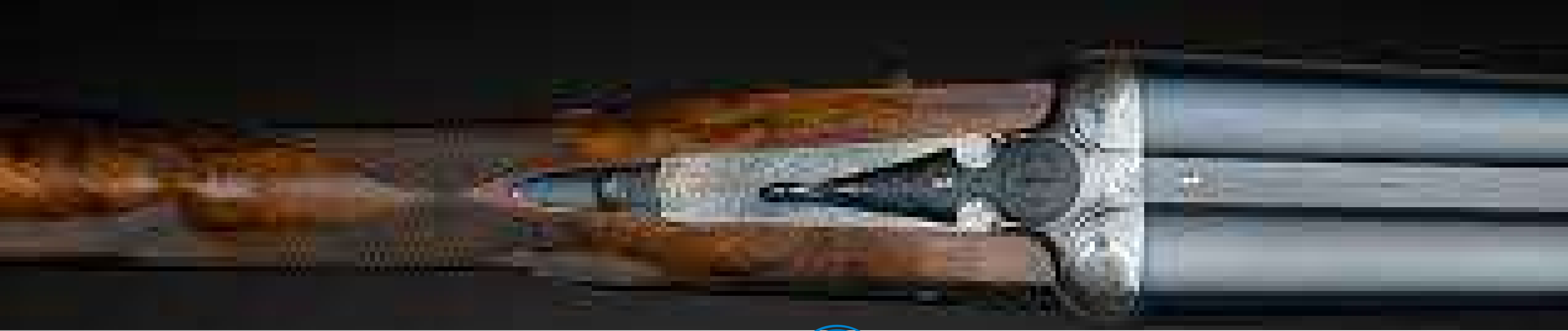
The Browning Gold 12 Gauge represents the turning point between classic recoil-operated traditions and modern gas-driven semi-autos. With reliable cycling, elegant design, and shooter-friendly ergonomics, it remains a respected and capable shotgun. Whether as a working gun or a collectible piece of Browning engineering history,



BROWNING



FN HERSTAL



Vincenzo Bernardelli
Firearms of distinction for centuries

- 1. S-UBERTO-1 CAL-12-SXS- FIXED CHOKE -1*/3***
- 2. S-UBERTO-1 CAL-20-SXS- FIXED CHOKE -1*/3***
- 3. S-UBERTO-2 CAL-12-SXS- FIXED CHOKE -1*/3***

**S. Uberto-1- Cal. 12 (SxS) -
Fixed Chokes: Full/Modified
(1★ / 3★)**

Model: S. Uberto 1

Configuration: Cal. 12 -
(SxS)

Serial Number: 112896

Barrel Length: 28 Inches

Chamber: 2¾ Inch
(70mm)

Year :1960

V. BERNARDELLI



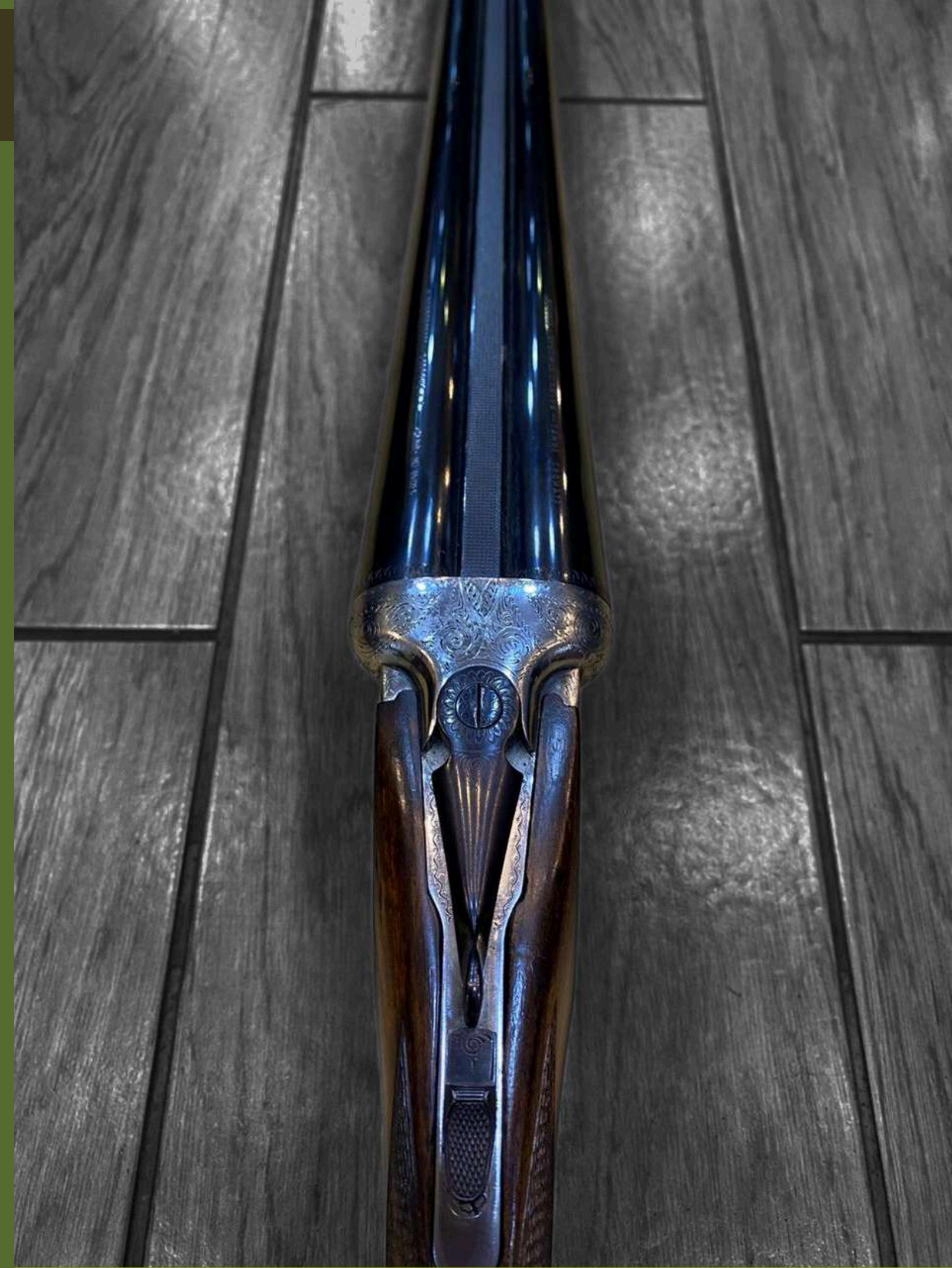
S. Uberto 1 - Cal. 12 (SxS) - Fixed Chokes: Full/Modified (1★ / 3★)

Action & Locking Mechanism

Boxlock Action: Built on the reliable Anson & Deeley system, featuring mechanical twin sears for each barrel to ensure consistent, independent firing.

Crossbolt Locking: Utilizes a Greener-style crossbolt that delivers a secure vertical lock-up, enhancing structural integrity and service life under repeated use.

V. BERNARDELLI





S. Uberto 1 - Cal. 12 (SxS) - Fixed Chokes: Full/Modified (1★ / 3★)

Barrel Material

The barrels are forged from Acciaio Speciale Extra Canne Cromate, a highly regarded Italian steel alloy designed to withstand consistent firing and weather conditions.
Finish: Deep bluing, hand-applied and polished for luster and protection.

Speacial features

Receiver: Case-hardened steel, engraved with scroll or game scenes depending on production year.
Trigger Group: Double triggers with mechanical reset—ideal for rapid second shot selection.

Safety & Internals

All internal components are finely polished by hand to ensure crisp trigger breaks and smooth opening/closing
Automatic Safety: Tang-mounted, auto-reset safety engages every time the action is opened—an essential feature for field use

V. BERNARDELLI

S. Uberto 1 - Cal. 12 (SxS) - Fixed Chokes: Full/Modified (1★ / 3★)

The S-Uberto 1 was hand-assembled by artisans in Gardone. Barrels were matched and jointed individually for regulation, ensuring convergent shot patterning. Stocks were shaped from European walnut blanks, finished using oil-based linseed treatment. Receivers underwent case-hardening using traditional bone charcoal or cyanide methods to enhance both strength and visual appeal.



**S-Uberto 1 - Cal. 20 - SxS -
Fixed Choke 1★/3★**

Model: S. Uberto 1

Configuration: Cal. 12 -(SxS)

Serial Number: 71680

Barrel Length: 28 Inches

Chamber: 2¾ Inch (70mm)

Year :1976

V. BERNARDELLI



S-Uberto 1 - Cal. 20 - SxS - Fixed Choke 1★/3★

Action & Locking Mechanism

Boxlock Action: Built on the reliable Anson & Deeley system, featuring mechanical twin sears for each barrel to ensure consistent, independent firing.

Crossbolt Locking: Utilizes a Greener-style crossbolt that delivers a secure vertical lock-up, enhancing structural integrity and service life under repeated use.

V. BERNARDELLI





S-Uberto 1 – Cal. 20 – SxS – Fixed Choke 1★/3★

Barrel Material

The barrels are forged from **Acciaio Speciale Extra Canne Cromate**, a highly regarded Italian steel alloy designed to withstand consistent firing and weather conditions.
Finish: Deep bluing, hand-applied and polished for luster and protection.

Speacial features

Receiver: Case-hardened steel, engraved with scroll or game scenes depending on production year.
Trigger Group: Double triggers with mechanical reset—ideal for rapid second shot selection.

Safety & Internals

All internal components are finely polished by hand to ensure crisp trigger breaks and smooth opening/closing
Automatic Safety: Tang-mounted, auto-reset safety engages every time the action is opened—an essential feature for field use

V. BERNARDELLI

S-UBERTO-1 CAL-20-SXS- FIXED CHOKE -1*/3*

Each S-Uberto 1 was hand-assembled by artisans in Gardone. Barrels were matched and jointed individually for regulation, ensuring convergent shot patterning. Stocks were shaped from European walnut blanks, finished using oil-based linseed treatment. Receivers underwent case-hardening using traditional bone charcoal or cyanide methods to enhance both strength and visual appeal.



S-Uberto 2 - Cal. 12 - SxS
- Fixed Choke 1★/3★

Model: S. Uberto 1

Configuration: Cal. 20 -(SxS)

Serial Number: 132037

Barrel Length: 28 Inches

Chamber: 2¾ Inch (70mm)

Year :1965

V. BERNARDELLI



S-Uberto 2 - Cal. 12 - SxS - Fixed Choke

1★/3★

Action & Locking Mechanism

Boxlock Action: Built on the reliable Anson & Deeley system, featuring mechanical twin sears for each barrel to ensure consistent, independent firing.

Crossbolt Locking: Utilizes a Greener-style crossbolt that delivers a secure vertical lock-up, enhancing structural integrity and service life under repeated use.

V. BERNARDELLI





S-Uberto 2 - Cal. 12 - SxS - Fixed Choke 1★/3★

Special Features

Case Hardening: Chemical or bone charcoal treatment created both visual appeal and hardened bearing surfaces.
Final Assembly: Each action was test-fit and proofed under Italian CIP standards before shipping.

Barrel Material

Precision-forged, chrome-lined steel barrel ensures high durability and resistance to corrosion. The bore is mirror-polished to enhance consistency and ease of cleaning.

Barrel Forging: Cold-hammer forged barrels ensure concentric bores and superior pressure resistance

Receiver

Constructed from aircraft-grade aluminum alloy, contributing to significant weight reduction while maintaining structural strength

V. BERNARDELLI

S-Uberto 2 - Cal. 12 - SxS - Fixed Choke 1★/3★

The V. Bernardelli S-Uberto 2 remains a benchmark in classic side-by-side shotgun design—combining Italian craftsmanship with functional engineering. As a true field-grade double built with refinement, it satisfies both the hunter's and collector's expectations. With rising appreciation for well-made SxS guns, the S-Uberto 1 has cemented its place as a timeless European sporting shotgun.



V. BERNARDELLI

A close-up photograph of a yellow and red sign. The sign has the words "WILD HUNTING" in large, bold, black capital letters on a yellow background. Below this, the word "SPAIN" is written in smaller, bold, black capital letters on a red background. The sign is slightly tilted and has a weathered appearance.

WILD HUNTING

SPAIN

- **Zabala -Eibar-12-SXS- FIXED CHOKE -1*/3***
- **Zabala -Eibar-410-SXS- FIXED CHOKE -1*/2***

**Zabala - Eibar - Cal. 12 - SxS -
Fixed Choke 1★ / 3★**

Configuration: Side-by-Side

Caliber: 12 Gauge

Barrel Length: 28 Inches

Chamber: 2¾ inch (70mm)

Action: Boxlock SXS

Serial Number:

Year of Manufacture: 1975

Origin: Eibar, Spain



Zabala - Eibar - Cal. 12 - SxS - Fixed Choke

1★ / 3★

Boxlock Side-by-Side Action:

Action & Locking Mechanism

Boxlock design built on the traditional Anson & Deeley platform.

Incorporates dual mechanical triggers and a wide locking lug system for enhanced strength. Features a Greener-style crossbolt for solid vertical lock-up, ensuring longevity even under regular field use.





Zabala - Eibar - Cal. 12 - SxS - Fixed Choke 1★ / 3★

Special Features

Traditional twin-trigger configuration offering instant barrel selection based on choke preference.

Selective Ejectors or Extractors:
Many models feature manual extractors

Barrel & Stock

Barrel Material: Standard-grade carbon steel, blued and fitted with soldered ribs.

Wood-to-Metal Fit: Typically tight on early models; walnut stocks were shaped with ergonomic balance and basic hand-checkering

Receiver

Polishing & Finishing: Action faces and locking lugs were polished to reduce wear and maintain reliable operation over thousands of cycles.

Zabala - Eibar - Cal. 12 - SxS - Fixed Choke 1★ / 3★

This Spanish-made side-by-side shotgun combines traditional craftsmanship with compact handling, making it ideal for small game or training purposes. The fixed full and modified chokes offer controlled spread and precision, while its light frame and balanced feel ensure easy carry and smooth swing. Built in Eibar—a historic center of Spanish gunmaking



**Zabala - Eibar -410 SxS -
Fixed Choke (1★ / 2★)**

Configuration: Side-by-Side

Caliber: 410 Gauge

Barrel Length: 28 Inches

Chamber: 2¾ inch (70mm)

Action: Boxlock SXS

Serial Number:

Year of Manufacture: 1968

Origin: Eibar, Spain



Zabala - Eibar - 410 SxS - Fixed Choke (1★ / 2★)

Boxlock Side-by-Side Action:

A straightforward, reliable break-action platform modeled on the Anson & Deeley system, favored for durability and simplicity.

Double Triggers: Traditional twin-trigger configuration offering instant barrel selection based on choke preference.





Zabala - Eibar - 410 SxS - Fixed Choke (1★ / 2★)

Special Features

Traditional twin-trigger configuration offering instant barrel selection based on choke preference.

Selective Ejectors or Extractors:
Many models feature manual extractors

Barrel & Stock

Barrel Material: Standard-grade carbon steel, blued and fitted with soldered ribs.

Wood-to-Metal Fit: Typically tight on early models; walnut stocks were shaped with ergonomic balance and basic hand-checkering

Receiver

Polishing & Finishing: Action faces and locking lugs were polished to reduce wear and maintain reliable operation over thousands of cycles.

Zabala - Eibar - 410 SxS - Fixed Choke (1★ / 2★)

This Spanish-made side-by-side shotgun combines traditional craftsmanship with compact handling, making it ideal for small game or training purposes. The fixed full and modified chokes offer controlled spread and precision, while its light frame and balanced feel ensure easy carry and smooth swing. Built in Eibar –a historic center of Spanish gunmaking.





S-5



1. **Cockerill-12 CAL-O/U- FIXED CHOKE -1*/3***
2. **P Dale Armi Brescia-20 CAL-SXS- FIXED CHOKE -1*/3***
3. **Marocchi-12 CAL-O/U- FIXED CHOKE -1*/3***
4. **Baikal-20 CAL-O/U- FIXED CHOKE -1*/3***
5. **Crup Esen 12 CAL-SXS- FIXED CHOKE -1*/3**



**Cockerill - CAL. 12 O/U -
Fixed Choke 1★/3★**

Serial #: 13281

Origin: Made in Italy

Configuration: 12 Gauge
Over/Under

Barrel Length: 28 inches

Chamber: 2¾ inch (70mm)

Serial: 13281



P. Dale Armi Brescia - Cal. 20
Side-by-Side - Fixed Choke
1★/3★

Configuration: Side-by-Side
(SxS)

Choke: Full / Modified (1★ / 3★)

Barrel: 28 Inch

Chamber: 2¾ Inch (70mm)

Serial Number: 3600

Country of Origin: Italy
(Brescia)

Manufacturer: P. Dale Armi



Marocchi - Cal. 12 Over/Under
- Fixed Choke 1★ / 3★

Configuration: Over/Under
Choke: Full / Modified (1★
/ 3★)

Barrel: 28 Inch

Chamber: 2¾ Inch (70mm)

Country of Origin: Italy

Manufacturer: Marocchi



**Baikal - O/U Cal. 20 - Fixed
Choke 1★/3★**

Configuration: Over/Under
Choke: Full/Modified
(1★/3★)

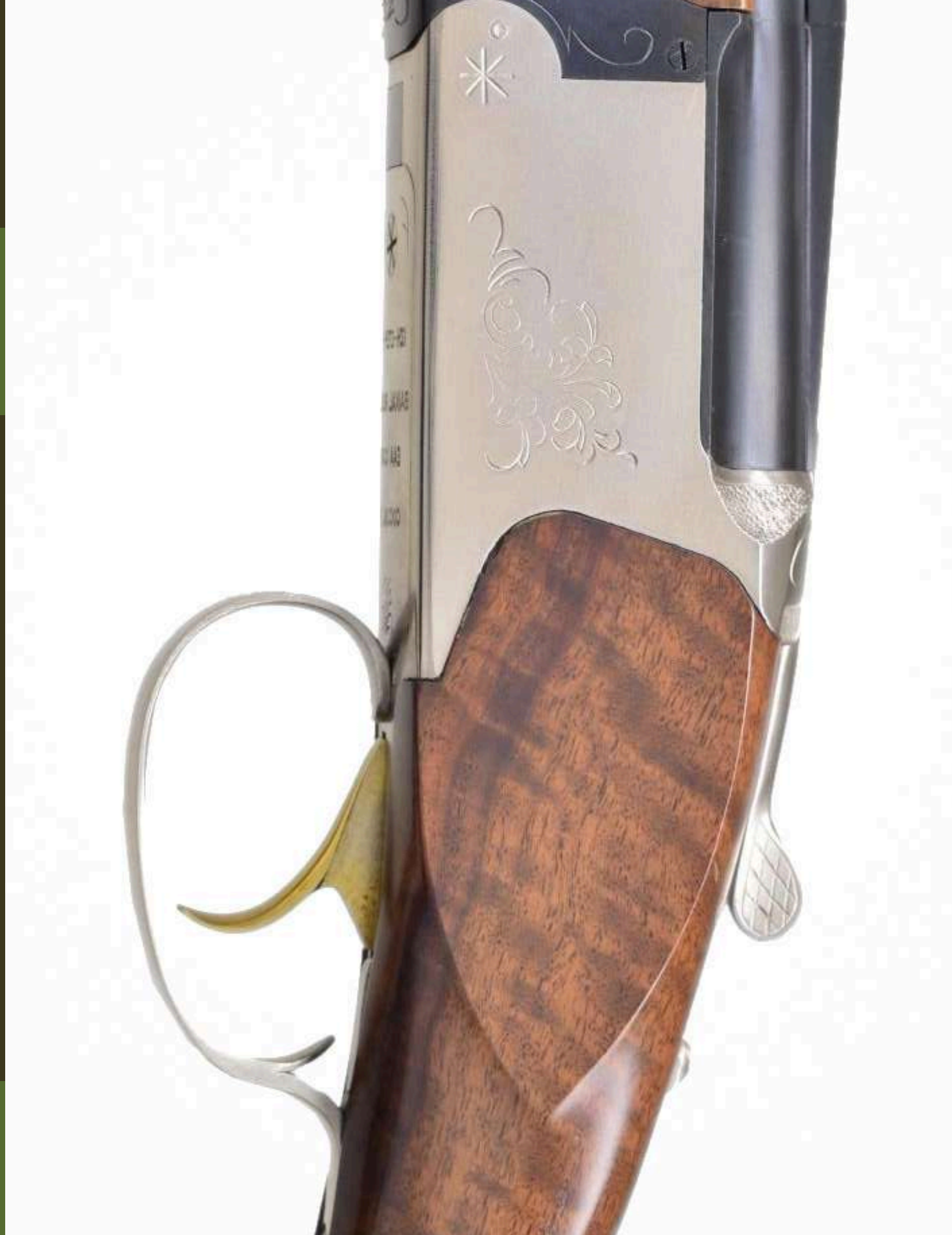
Barrel Length: 28 Inch

Chamber: 2-3/4 Inch (Cam 70)

Country of Origin: Russia

Serial #: 092765227B

Triger :Single Triger



Title: Crup Esen - SxS Cal. 12 -
Fixed Choke 1★/3★

Configuration: Side-by-Side

Gauge: 12 -Hammers

Choke: Full/I-Modified
(1★/2★)

Barrel Length: 30 Inch

Chamber: 2-3/4 Inch (Cam 70)

Country of Origin: Germany

Serial #:





- | | |
|-----------------------------|-----------------------------|
| 1. Breda Single | 36 CAL-Single Barrel |
| 2. Breda Single | 8 CAL-Single Barrel |
| 3. Invest Arm Single | 24 CAL-Single Barrel |



Breda Single - Cal. 36 (Single Barrel)

Configuration: Single-Barrel Shotgun

Gauge: 36 CAL (410)

Barrel Length: 30 Inch

Chamber: 2-3/4 inch (70mm specified)

Serial Number: 070399

Country of Origin: Italy

Year : 1968



Breda Single Shot – Cal. 8 (Lever Break-Action)

Country of Origin: Italy

Barrel Length: 22 Inch

Chamber: 2-3/4 Inch (70mm)

Type: Single-shot, break-action

Operating Mechanism:
Lever-operated opening



**Investarm Single - Cal. 24
(Single Barrel)**

Configuration: CAL 24 –
Single Barrel

Country of Origin: Italy

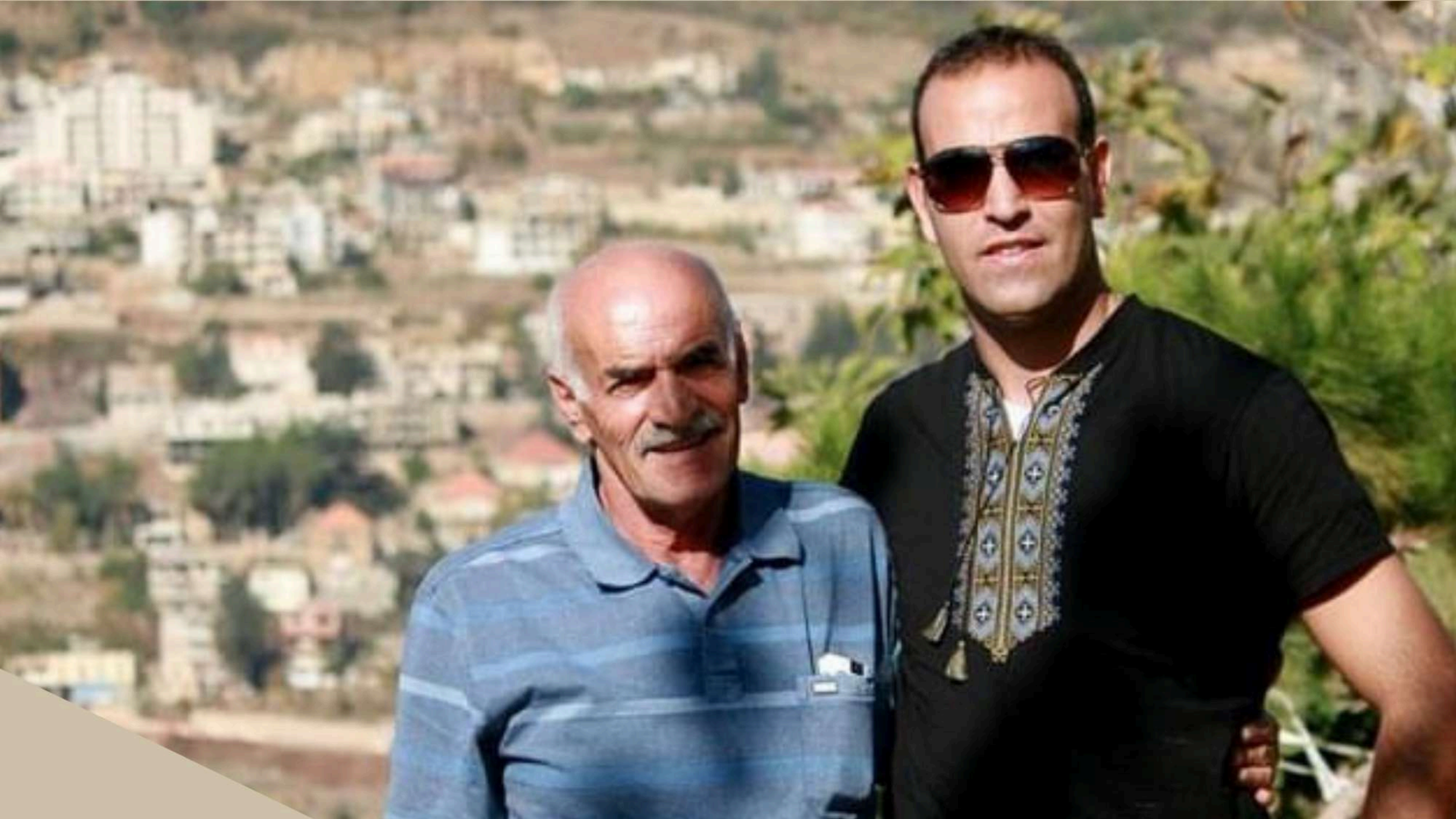
Barrel Length: 22 inches

Chamber: 2-3/4 inch
(70)

Serial:42043







RIP my beloved father



BURNING





Circles represent the diameter of a lead shot string (in inches) as distance (in yards) increases.

Bore narrowing is exaggerated for clarity.

